

DRC

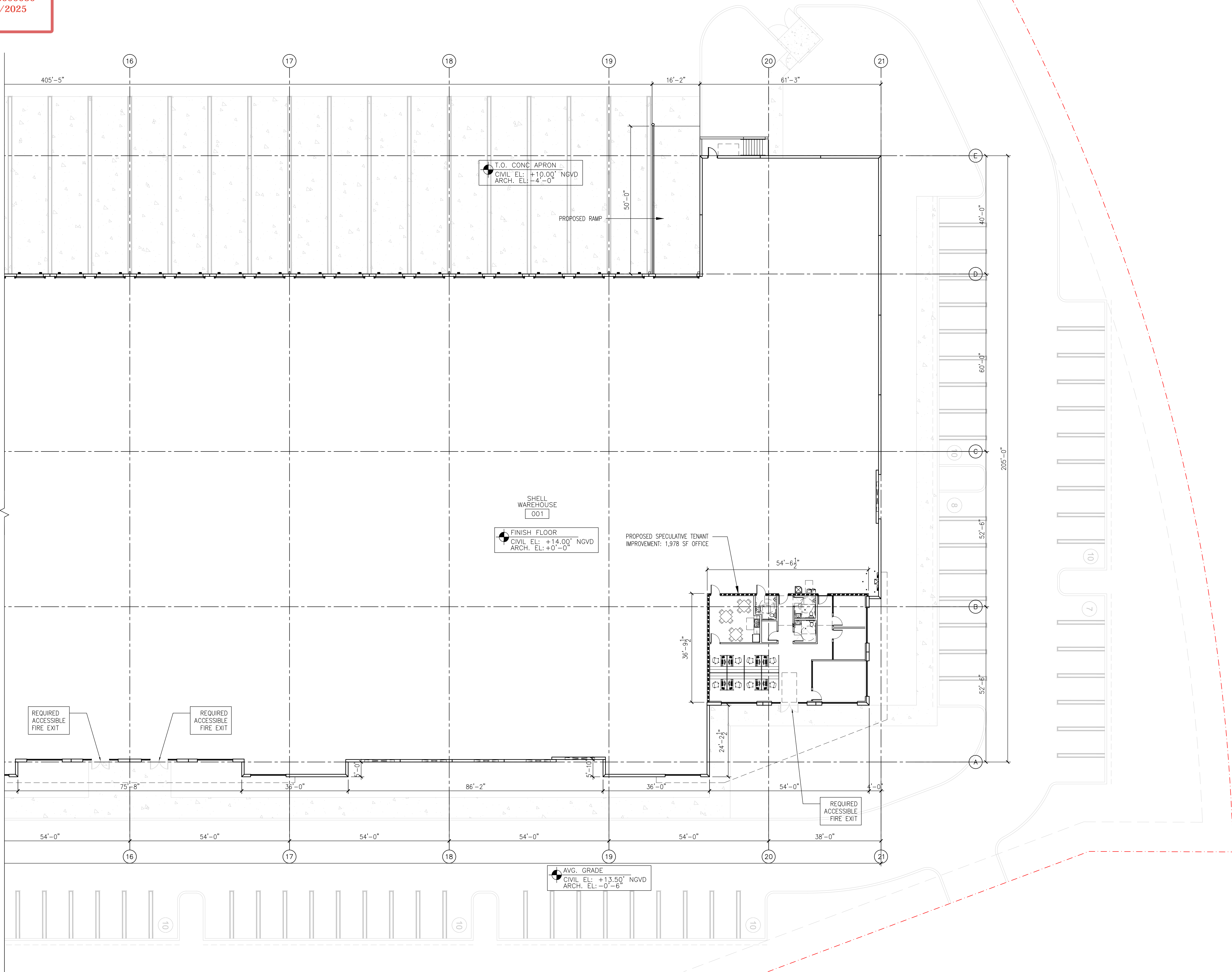
PZ25- 12000030  
11/19/2025

D

C

B

A



1 PARTIAL FLOOR PLAN – BLDG B

A1.05 SCALE: 1/16" = 1'-0"

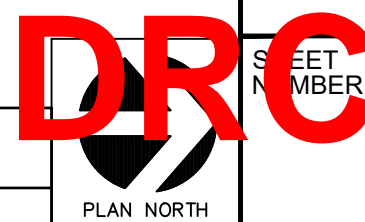
1

2

3

4

5



PZ25-12000030

10/01/2025

CLIENT

FIRST INDUSTRIAL  
REALTY TRUST

ONE NORTH WACKER DRIVE, SUITE 4200  
CHICAGO, IL 60606

COPYRIGHT

This drawing has been prepared solely for the intended use, thus any reproduction or distribution for any purpose other than authorized by Arcadis is forbidden. Written dimensions shall have precedence over scaled dimensions. Contractors shall verify and be responsible for all dimensions and conditions on the job, and Arcadis shall be informed of any variations from the dimensions and conditions shown on the drawing. Shop drawings shall be submitted to Arcadis for general conformance before proceeding with fabrication.

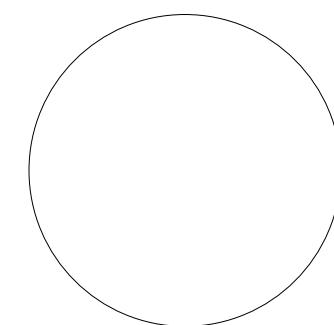
Arcadis Professional Services (USA) Inc.

ISSUES

0	DRC SUBMITTAL	08/27/25

PRINT COPIES OF THIS DOCUMENT ARE NOT CONSIDERED SIGNED AND SEALED AND THE SIGNATURE MUST BE VERIFIED ON ANY ELECTRONIC COPIES.

SEAL



ARCADIS

7000 North Federal Hwy,  
Boca Raton, FL 33487  
Tel 561 393 6555, Fax 561 395 0007  
www.arcadis.com

PROJECT

FIRST 95 PHASE 2  
SITE PLAN APPROVAL

TBD  
POMPAHO, FLORIDA

PROJECT NO:  
30292680

DRAWN BY:

JPM

CHECKED BY:

JC

PROJECT MGR:

SB

APPROVED BY:

JJ/JC

SHEET TITLE

PARTIAL BLDG B  
FLOOR PLAN

SHEET NUMBER

A1.05

ISSUE

0

SCALE CHECK  
1"=100'